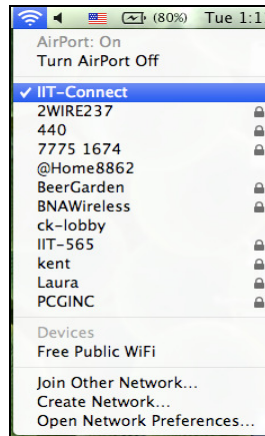
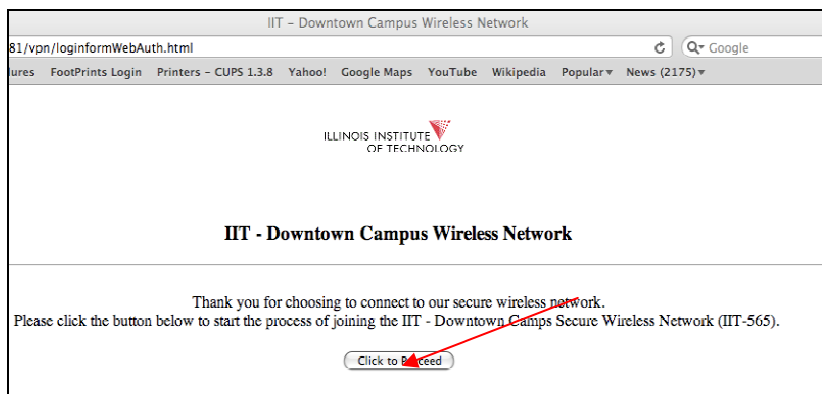


Connecting to IIT-565 Wireless Network Mac Version

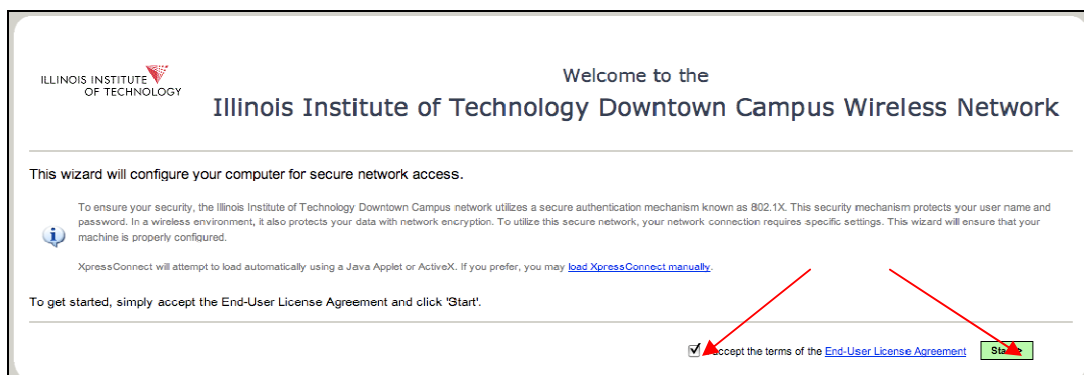
1. From the Airport icon connect to IIT-Connect wireless network



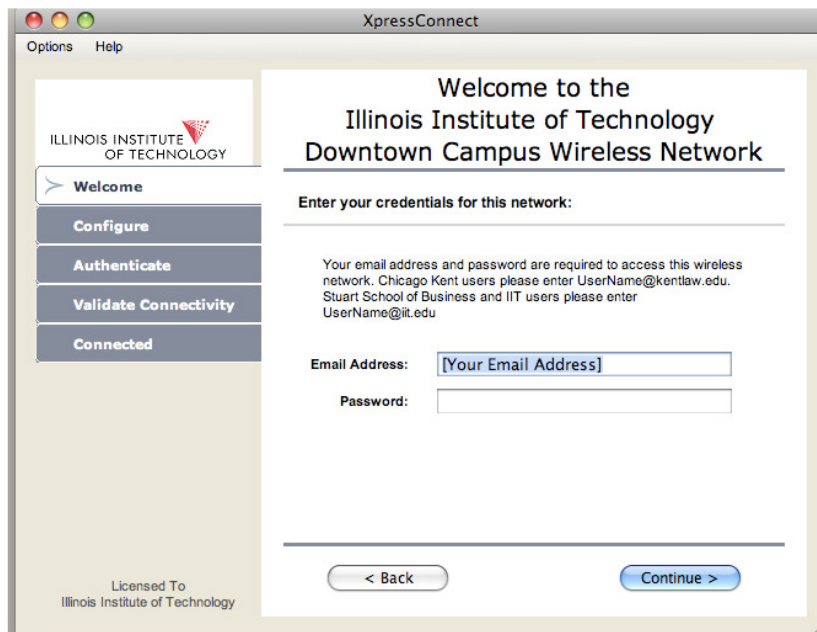
2. Once connected, open your Safari browser and click the icon Click to Proceed



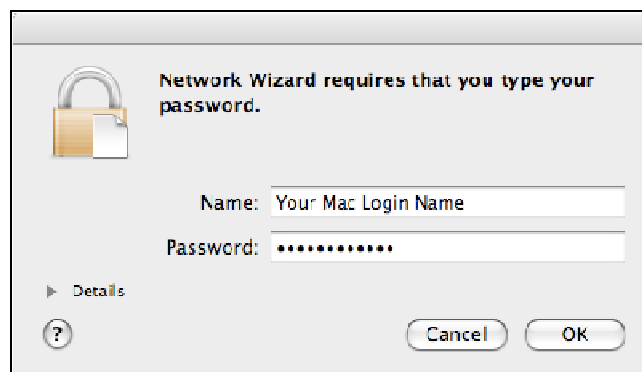
3. If the page above does not render please type in the following URL:
<https://secureconnect.kentlaw.edu>
4. Check the box stating "I accept the terms of the End-User License Agreement" and click Start



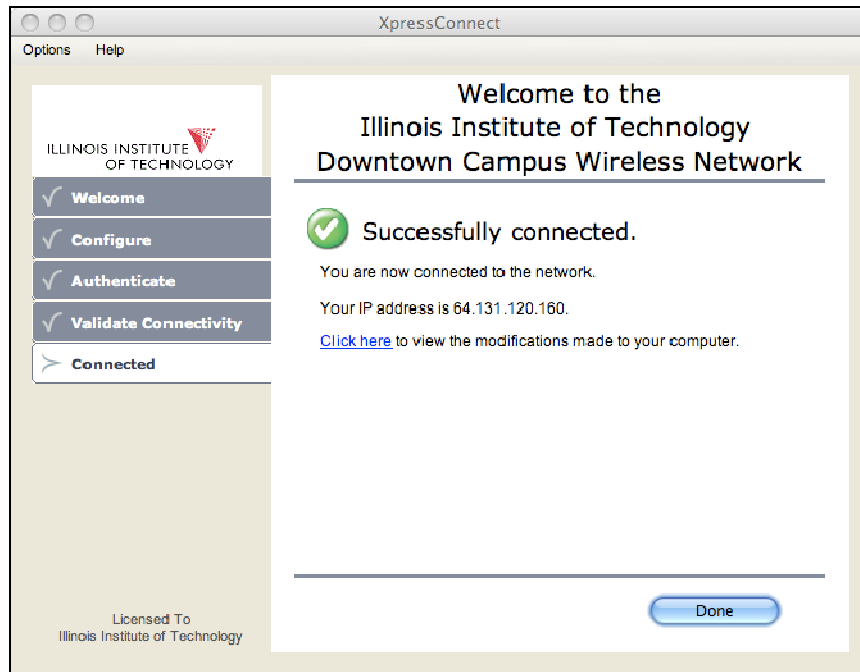
5. The XpressConnect configuration wizard will start and you will be prompted to enter **your complete Chicago Kent or IIT email address** and the corresponding password



6. Click Continue
7. You may be prompted to enter the password of your Mac computer. Click OK



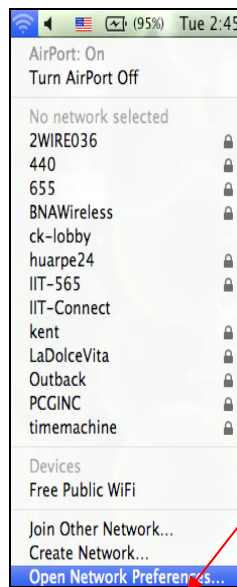
8. You should now be successfully connected to the IIT-565 wireless network
9. Click Done



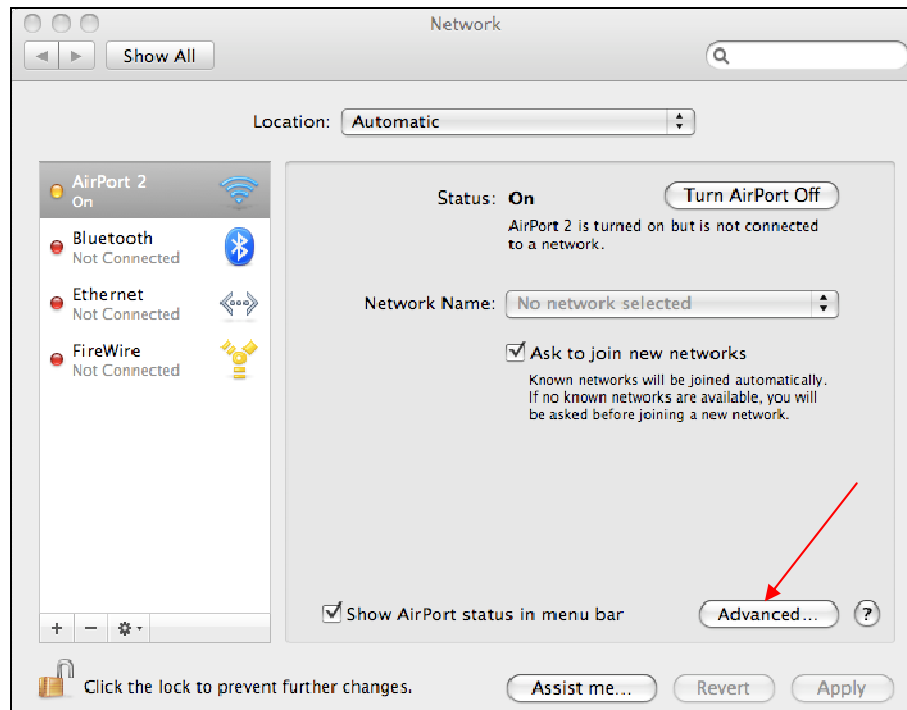
If you are still not connected after following these steps please try the manual connection below to access the IIT-565 network

Manual Connection

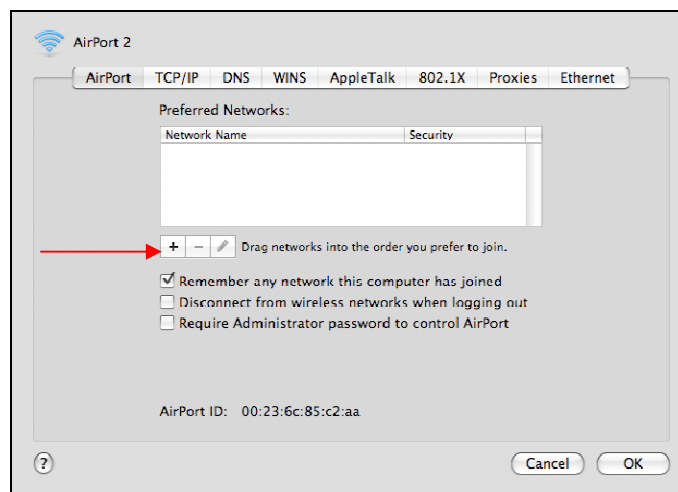
1. Via the Airport icon choose Open Network Preferences



2. Choose Advanced



3. Click the '+' sign to add a network



4. Enter the following information

- a. Name: IIT-565
- b. Security: WPA2 Enterprise
- c. Username and password: Enter **your complete Chicago Kent or IIT email address** and the corresponding password
- d. 802.1X: **Keep default Option**
- e. TLS Certificate: **Please ignore if you do not have this option**
- f. Remember this network: checked

Enter the name of the network.

Enter the name of the network you want to add, and then enter the password if necessary. You can also click Show Networks to see a list of available networks.

Network Name: IIT-565

Security: WPA2 Enterprise

User Name: your kent email address

Password:

802.1X: Automatic

TLS Certificate: com.apple.systemdefault

Remember this network

Show Networks Cancel Add

5. Click Add
6. Click OK
7. Click Apply
8. You should now be successfully connected to the IIT-565 wireless network