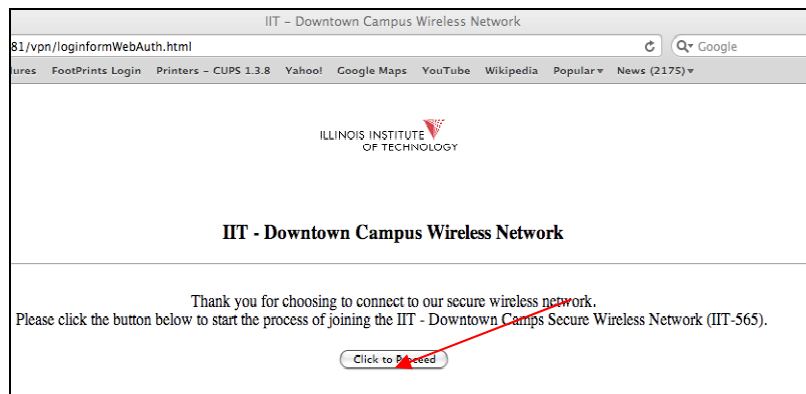


Connecting to IIT-565 Wireless Network Windows 7 and Vista Version

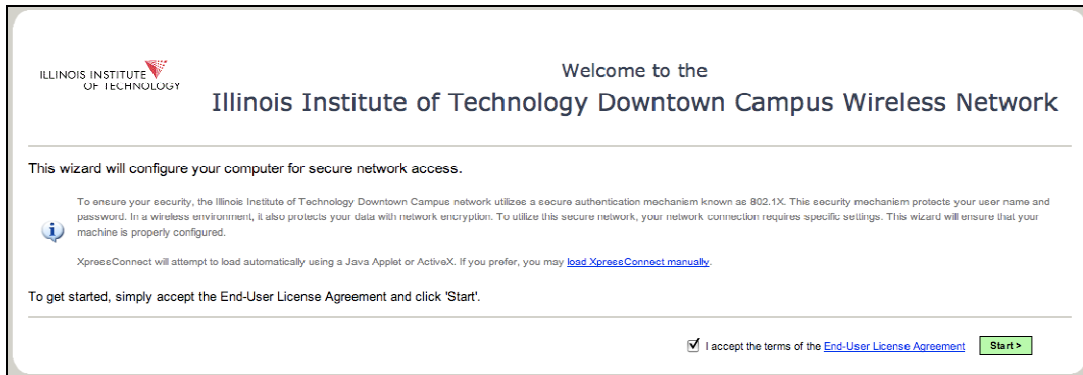
1. Click on wireless icon located on the lower right hand corner of your screen
2. Click on the IIT-Connect wireless network



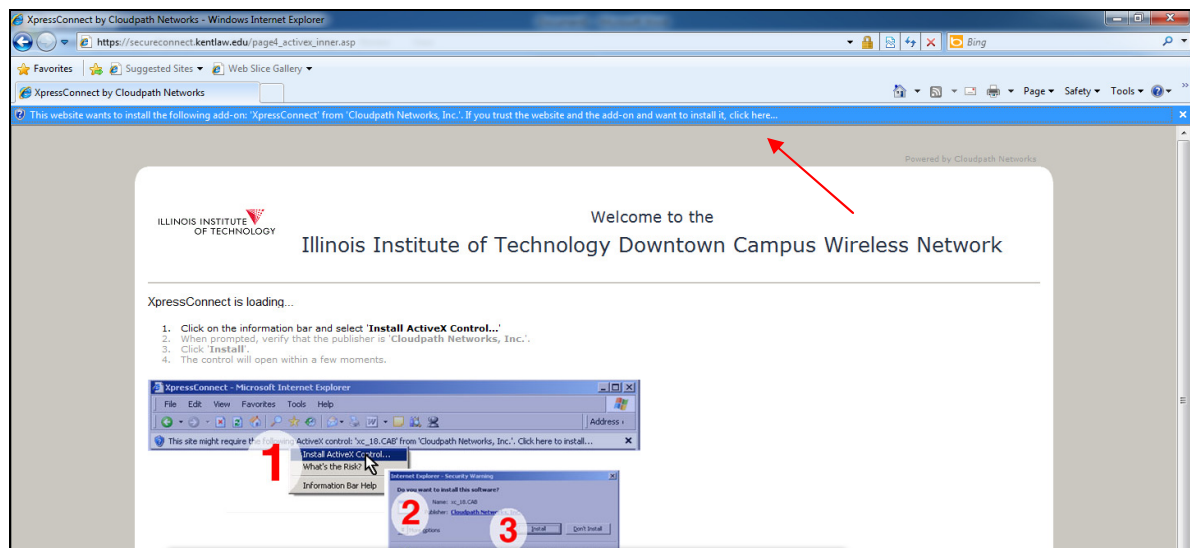
3. Click Connect
4. Once connected, open your Internet Explorer browser and click the icon Click to Proceed



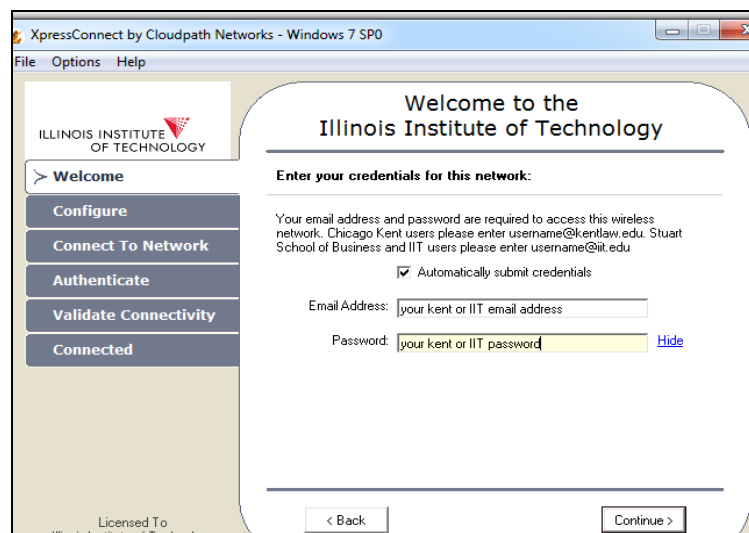
5. If the page above does not render please type in the following URL:
<https://secureconnect.kentlaw.edu>
6. Check the box stating "I accept the terms of the End-User License Agreement" and click Start



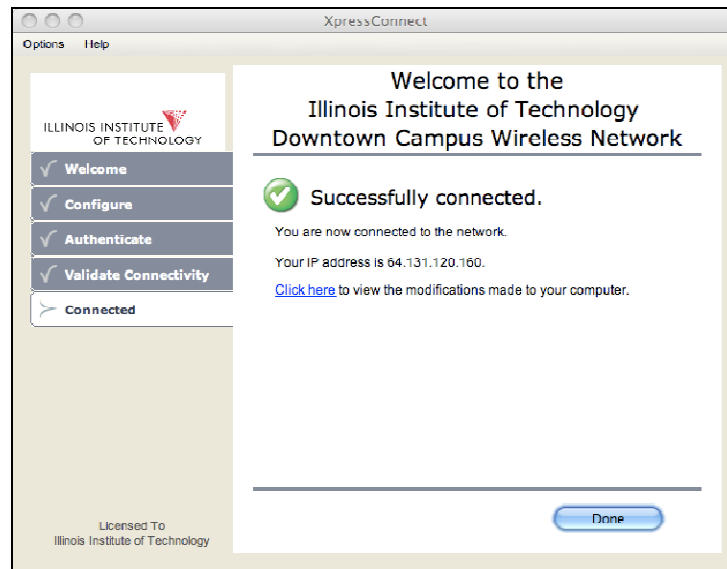
7. Click the Active X bar at the top of the page to Install the Add-on



8. Allow the program to make any changes to your computer if you are prompted
9. Enter **your complete Chicago Kent or IIT email address** and the corresponding password when prompted, then click continue



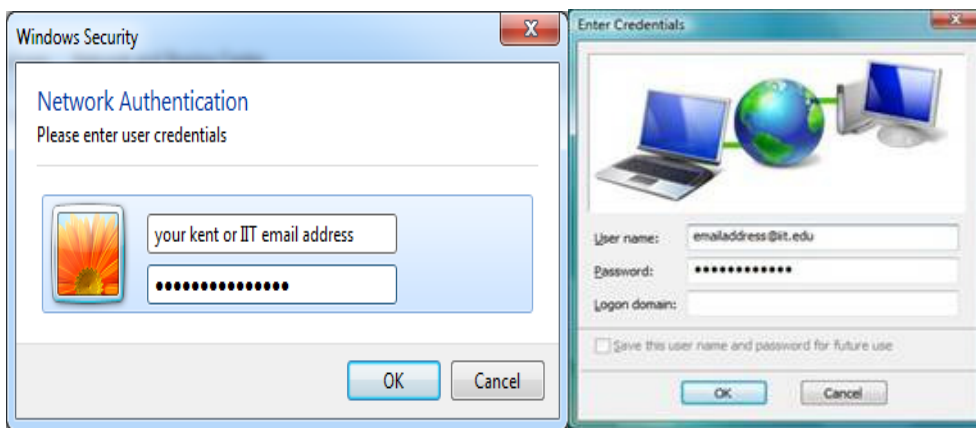
10. You should now be successfully connected to the IIT-565 wireless network
11. Click Done



If you are still not connected after following these steps please try the manual connection below to access the IIT-565 network

Manual Connection – Windows 7 & Vista

1. Go to Start, Control Panel, Network and Sharing Center
2. Click Manage wireless networks
3. Choose Add
4. Select Manually create a network profile
5. Enter the following information:
 - a. Network Name: IIT-565
 - b. Security Type: WPA2-Enterprise
 - c. Encryption Type: AES
 - d. Security Key: leave blank
 - e. Start this connection automatically: check
 - f. Connect even if network is not broadcasting: uncheck
6. Click Next
7. Click Change Connection Settings
8. Click Security tab
9. Click Settings
10. Uncheck Validate Server certificate
11. Click Configure
12. Uncheck Automatically use my Windows Logon name and password
13. Click OK three times
14. Click Close
15. Click the message stating Additional Information is required to connect to this network
16. Enter **your complete Chicago Kent or IIT email address** and the corresponding password. Leave domain blank if you see the message to the right



17. You should now be connected to the IIT-565 Network