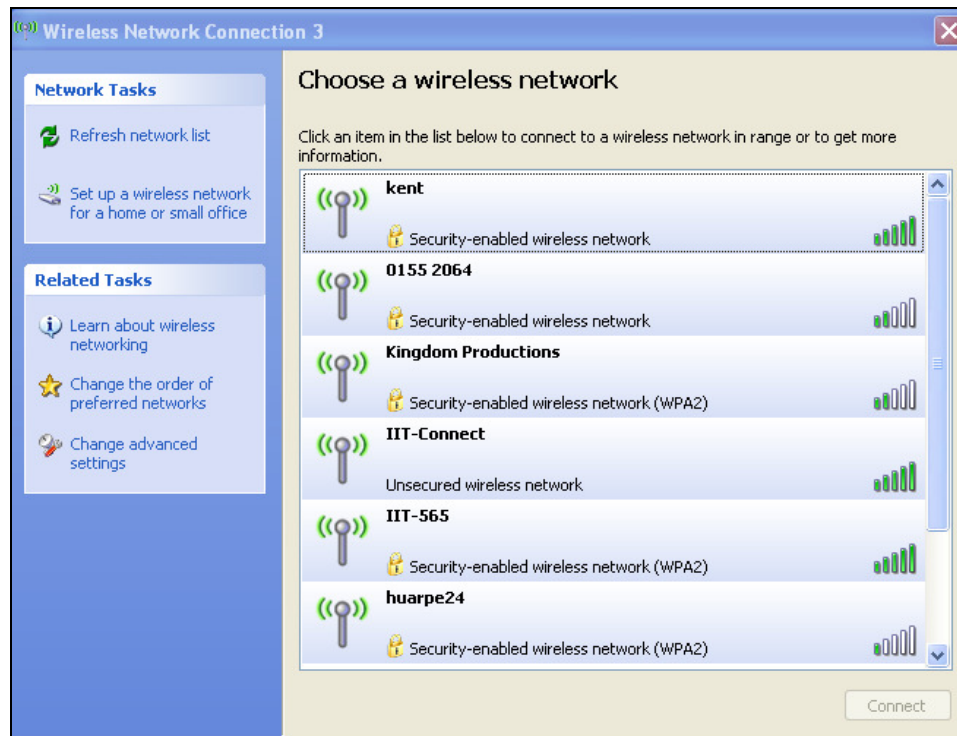


## Connecting to IIT-565 Wireless Network Windows XP Version

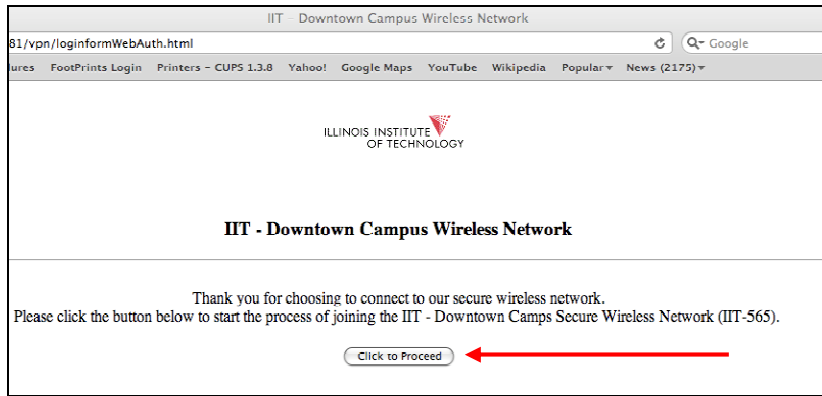
1. Click on wireless icon located on the lower right hand corner of your screen. Click on view wireless networks
2. Click on the IIT-Connect wireless network



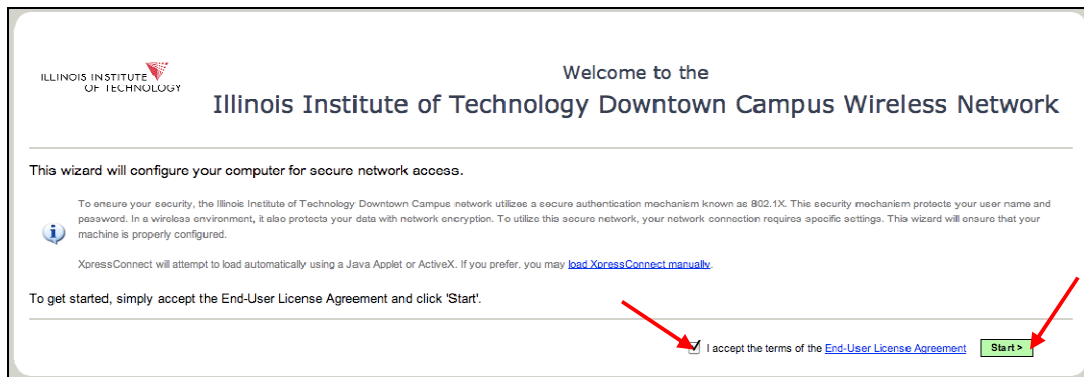
3. Click Connect. If you receive the following message click Connect Anyway



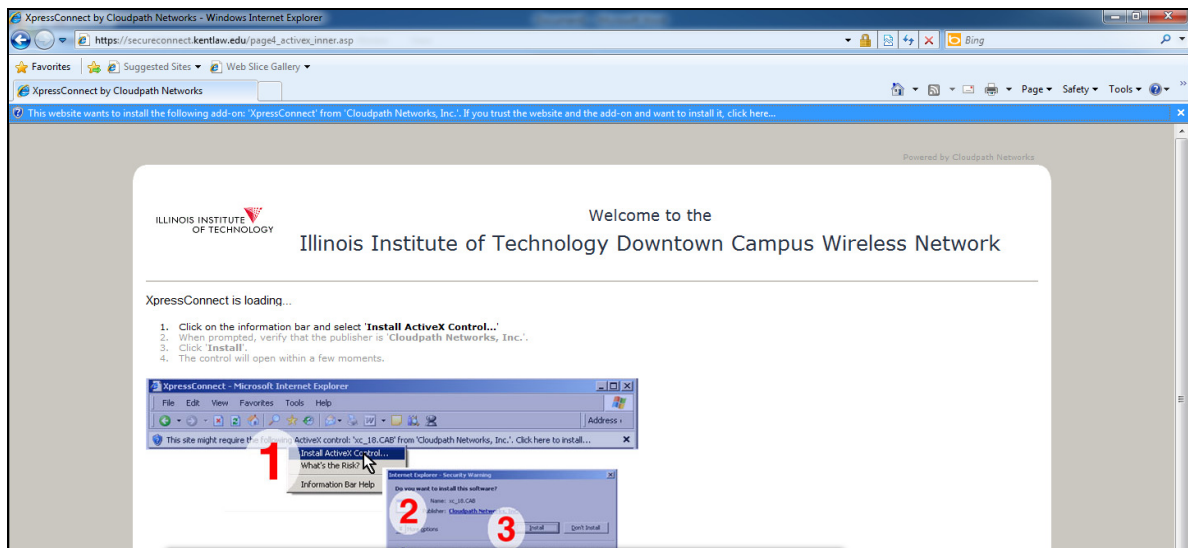
4. Once connected, open your Internet Explorer browser and click the icon Click to Proceed



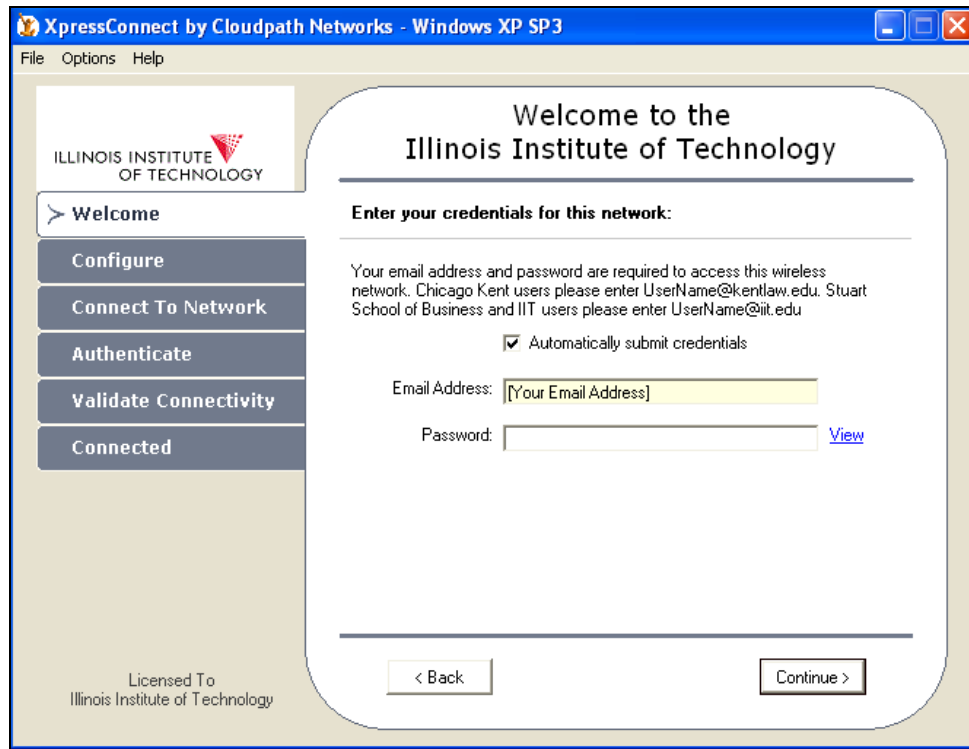
5. If the page above does not render please type in the following URL:  
<https://secureconnect.kentlaw.edu>
6. Check the box stating “I accept the terms of the End-User License Agreement” and click Start



7. Click the Active X bar at the top of the page to Install the Add-on



8. Allow the program to make any changes to your computer if you are prompted
9. Enter **your complete Chicago Kent or IIT email address** and the corresponding password when prompted, then click continue



10. You should now be successfully connected to the IIT-565 wireless network
11. Click Done

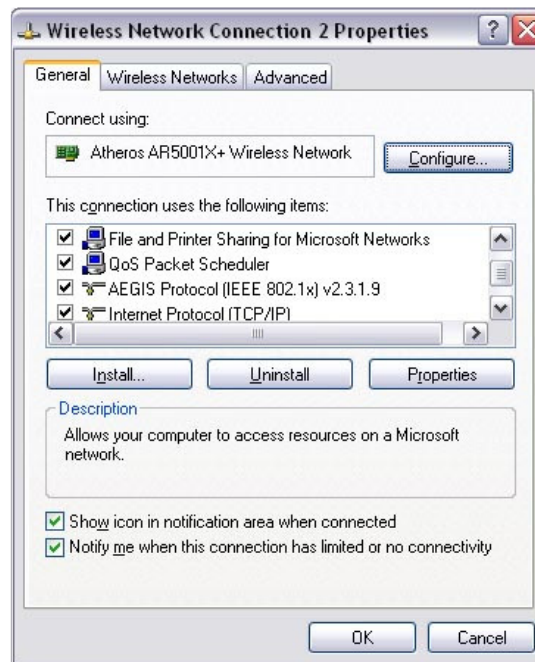


If you are still not connected after following these steps please try the manual connection below to access the

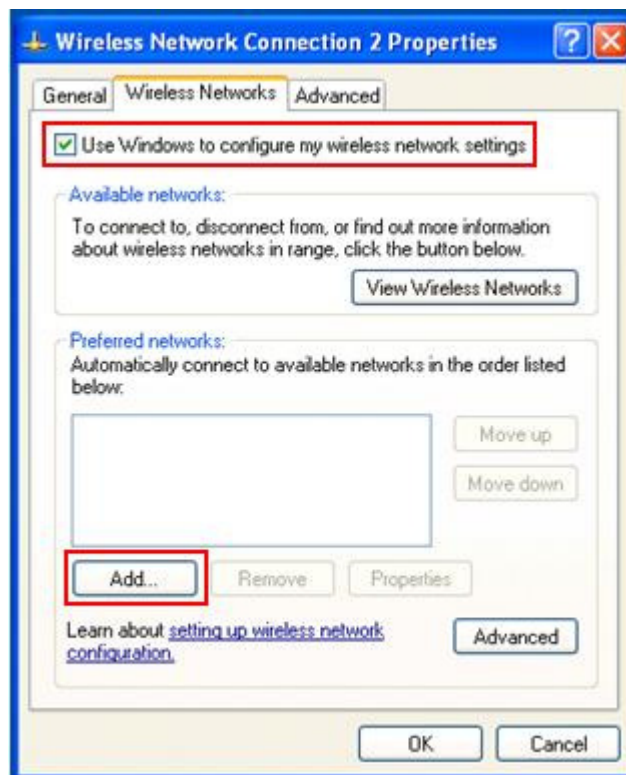
# IIT-565 network

## Manual Connection – Windows XP

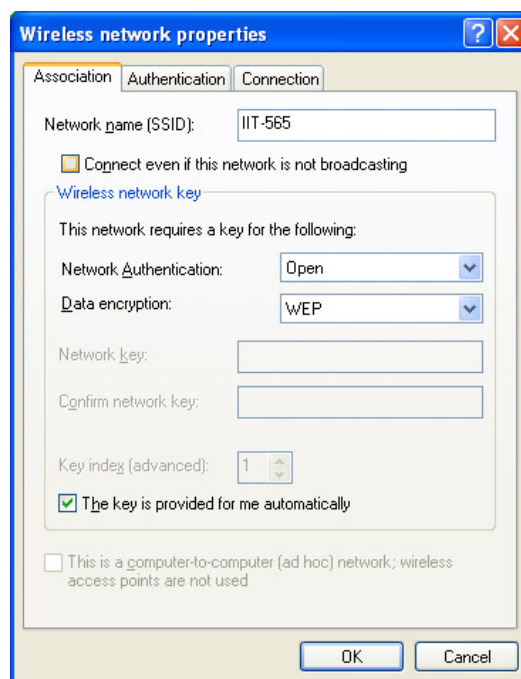
1. Go to Start, Control Panel, Network Connections
2. Right click Wireless Network Connection and click Properties
3. Click Wireless Networks Tab



4. Check Use Windows to configure my wireless network settings
5. Click Add

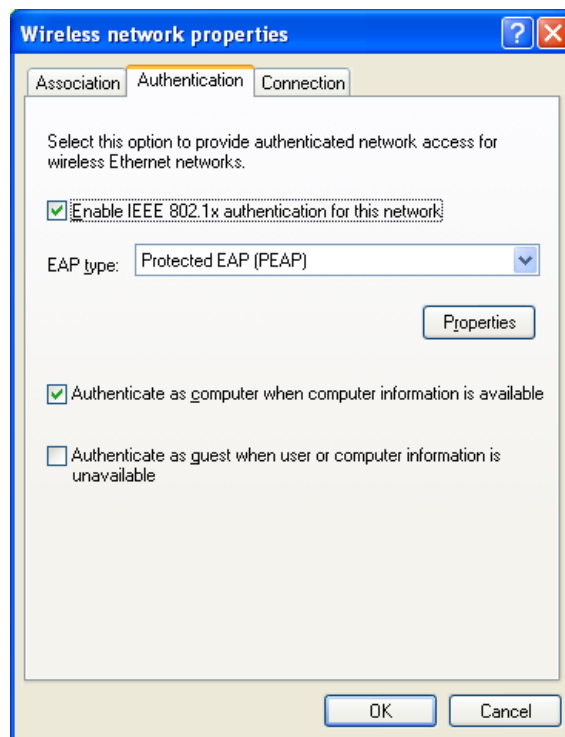


6. Enter IIT-565 as the Network name (SSID):

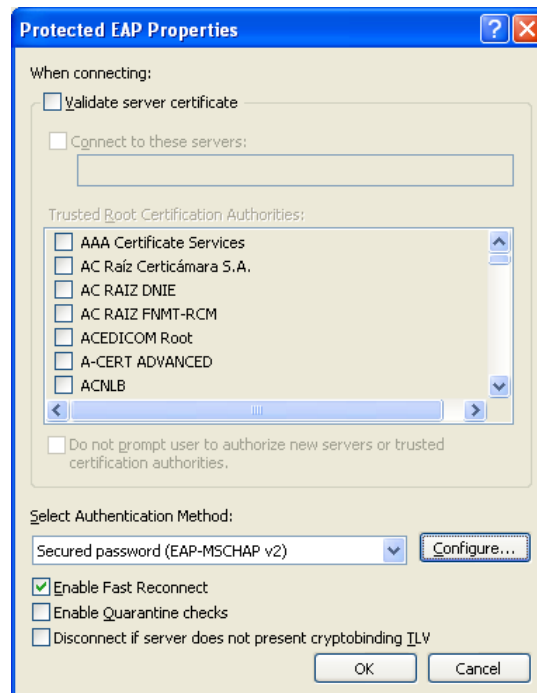


7. Click Authentication tab and change EAP type to Protected EAP (PEAP)

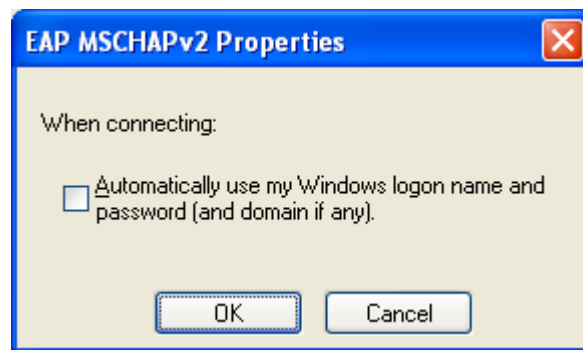
8. Click Properties



9. Uncheck Validate Server certificate
10. Click Configure



11. Uncheck Automatically use my Windows Logon name and password



1. Enter **your complete Chicago Kent or IIT email address** and the corresponding password. Leave domain blank



12. You should now be connected to the IIT-565 Network